



# Democratizing Automation



# Agenda

- 01** Hyperautomation Build Phase- Low Code | No Code
- 02** StudioX overview and deepdive
- 03** Studio Pro overview and deepdive
- 04** Studio 20.4 overview and deep dive
- 05** Q&A

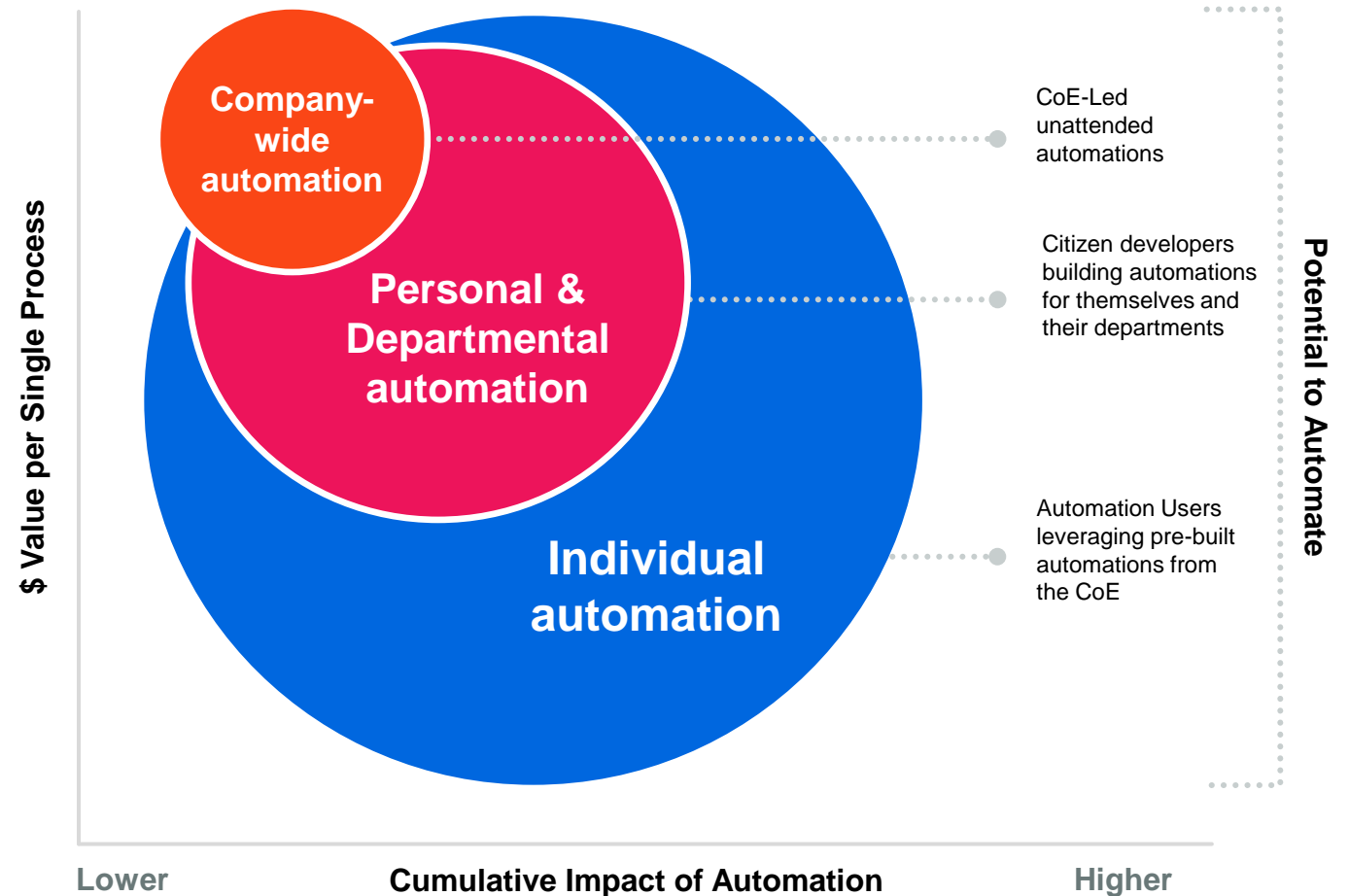
# Foster RPA adoption



Your scaling opportunity with the help of individually-created automations to **drive bigger revenue and cost savings from RPA**

*Gartner Predicts 2020:*

By 2023, there will be a 30% increase in the use of RPA for front-office functions (sales and customer experience)



# You're hyperautomation-ready with the **UiPath Platform**

## Discover

Discover what to automate with process mining powered by AI

## Build

RPA developers, citizen developers, and employees create automations

## Manage

Manage your digital robots from anywhere, securely at any scale

## Run

Robots work with your applications to carry out automations

## Engage

Robots collaborate with people to automate complete processes

## Measure

Embedded analytics give you deep insights into robot *and* business metrics



Automation Hub  
Process Mining  
Task Capture  
Task Mining

StudioX  
Studio  
Studio Pro

Orchestrator  
Automation Cloud  
AI Fabric  
Test Manager

Attended Robots  
Unattended Robots  
AI Robots  
Testing Robots

Action Center  
Apps  
Chatbots

Insights



\* Process Analysts



\* RPA & Citizen Developers



\* IT Operations



\* Business Users



\* Business Analysts



# Enable everyone in your organization to **build and use automations**



RPA Developers



Citizen Developers

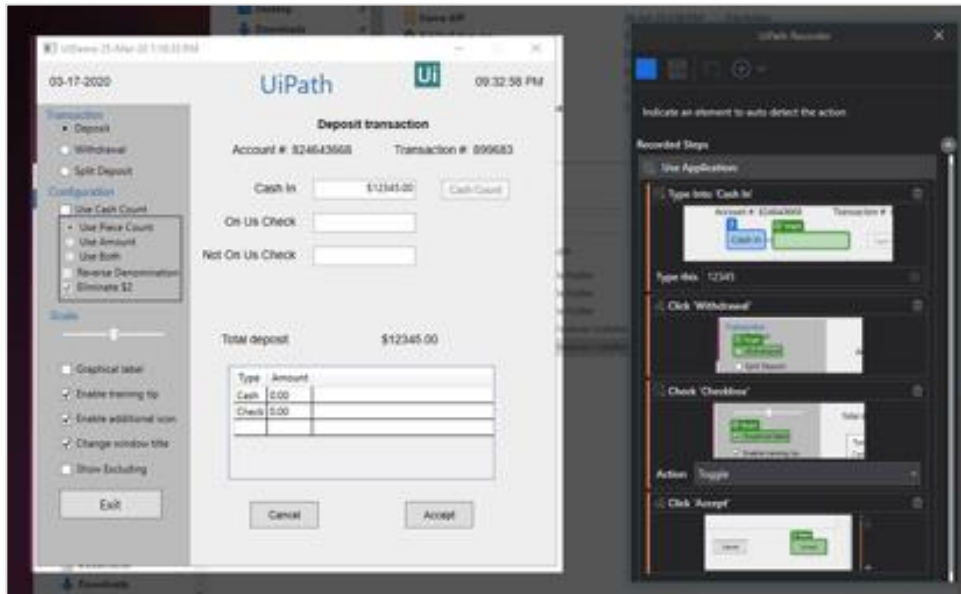


Business Users



**Constantly engage  
and empower  
employees to drive  
new ways of working**

# Studio – What's New



## Improved UI Automation

Better automation of any UI interface, basing the result on multiple complementary methods for improved accuracy

## Governance

Ensure common best practices and code conventions around building scalable automation for all types of users

## Developer Productivity

Faster performance and an improved command palette to speed development time

## Source Control

Ensure that teams can continue developing new automation together, while keeping complete control over their work



# What is StudioX?

Simplified version of Studio to rapidly automate without the need for developer resources or coding — making automation accessible to all.



**Aim to automate Day-to-Day Simple Tasks**



**Simplified User Experience**



**Focused on Excel & Outlook**



**Build and Run your own Automation**



**Bottom-up Automation First Approach**

*...we are bringing automation to the masses, putting the employees in the driver seats of automation initiatives.*

## StudioX Platform

Mainly dedicated to **non-technical personas**



**Business users**



**Business Analyst**



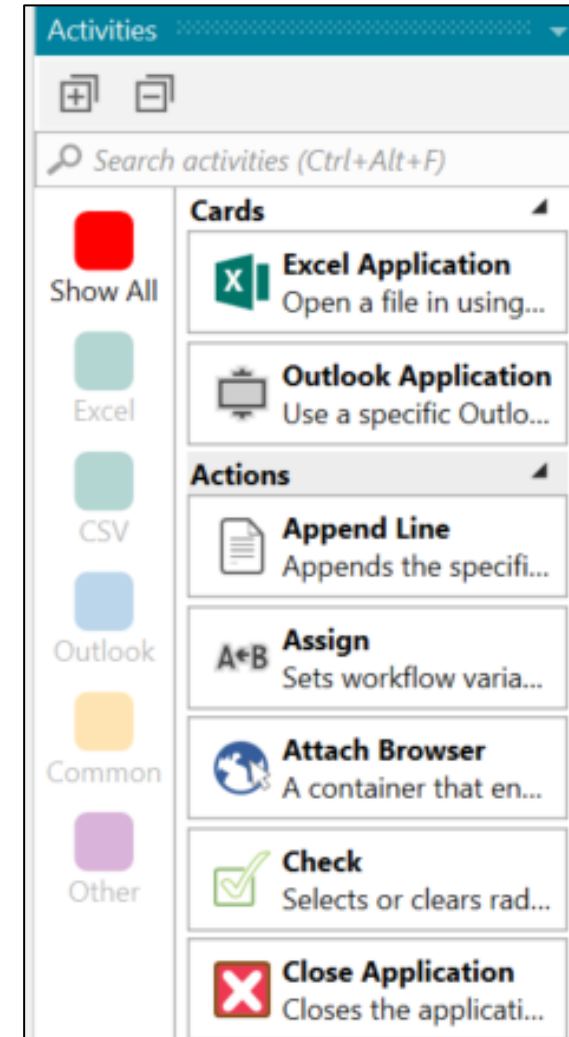
**Domain Experts/Process Owners**



**Citizen Developers**

# What does StudioX bring?

- Delivered as a profile in UiPath Studio
- Includes an attended Robot
- Straightforward business tasks automation
- Seamless Office integration
- Simplified interface for easy access to features





**Let's see  
how  
StudioX  
works**



# Studio X Use Cases



- Using it as a starting template, Save as a new file (could be Word or PDF), and then "pass along"
- Extracting information from a Word doc and move it into another system
- Comparing the differences between files



- Taking large spreadsheets generated by a system and splitting them into multiple sheets based on specific data types
- Taking data from spreadsheets and entering it into another system
- Extracting data from another system and using it to create a spreadsheet
- Merging several spreadsheets into a different system



- Process emails that fit a certain criteria (e.g. emails arrive with specific attachments and they process the contents of those attachments)
- Send a file created by the automation via email
- Status update/ communication that includes the results of an automation workflow



- Using it as a starting template, Save as a new file, and then "pass along"
- Extracting information from a PDF document move it into another system (e.g. pull out lines in an invoice and enter it into an expense tracker).
- Comparing the differences between files



- Work with the Windows file system
- Download files from the web browser and open the recently downloaded file.
- Upload files through a web browser



- Entering data into desktop and web applications
- Getting data from desktop and web applications
- Moving data between web applications and desktop application

# Introducing Studio Pro

## New Premium Studio SKU

Adds new testing capabilities including

RPA Testing

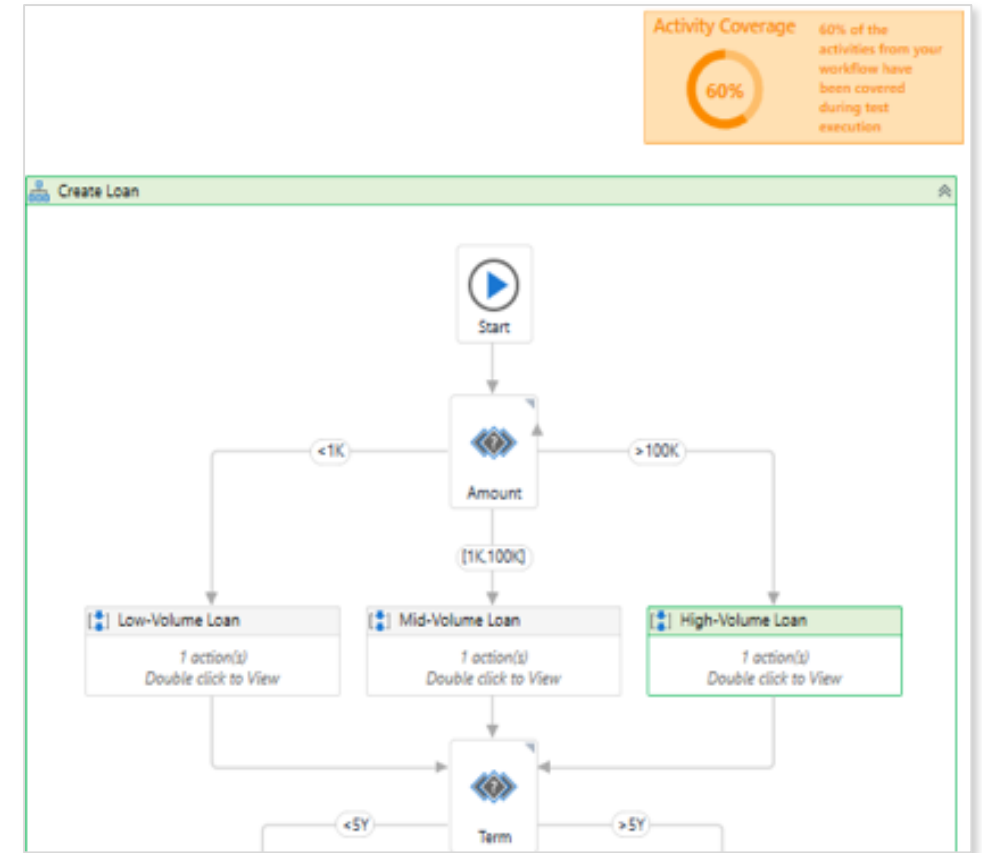
API Automation

Mobile Automation

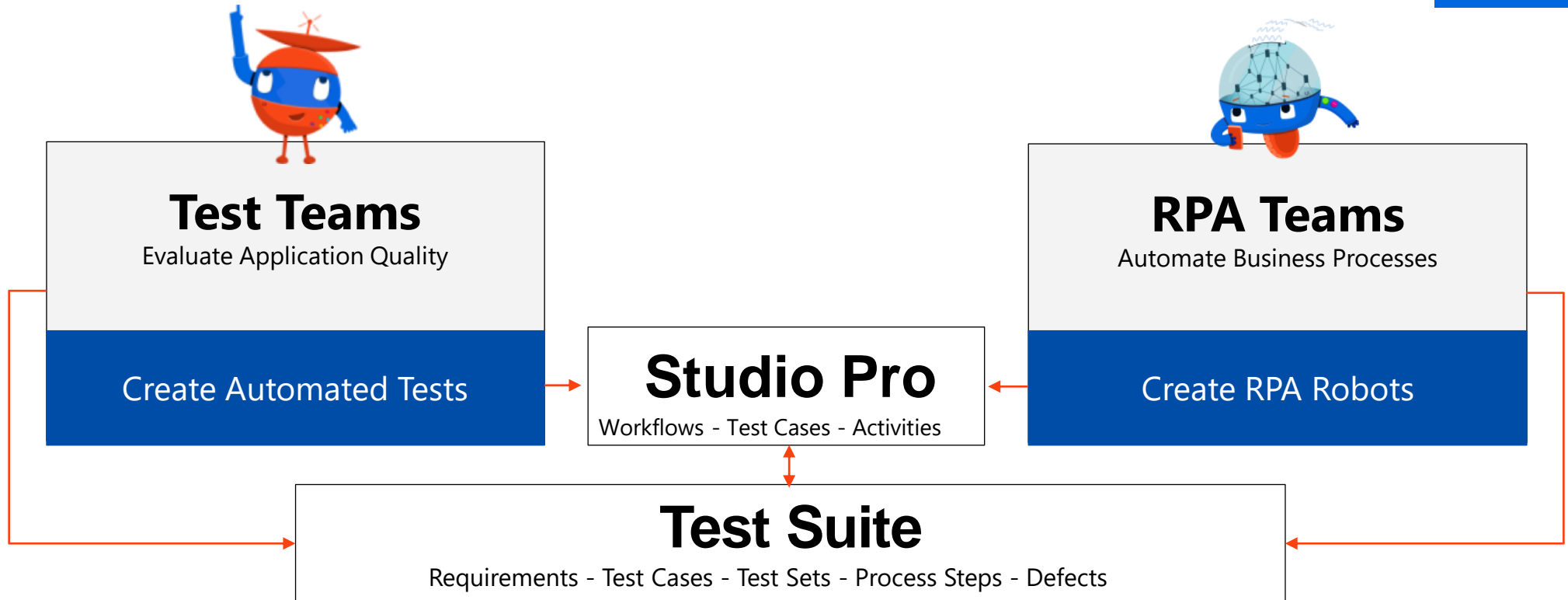
SAP Testing

Data-Driven Testing

A key component of a larger Test Suite



# Test Suite – New!

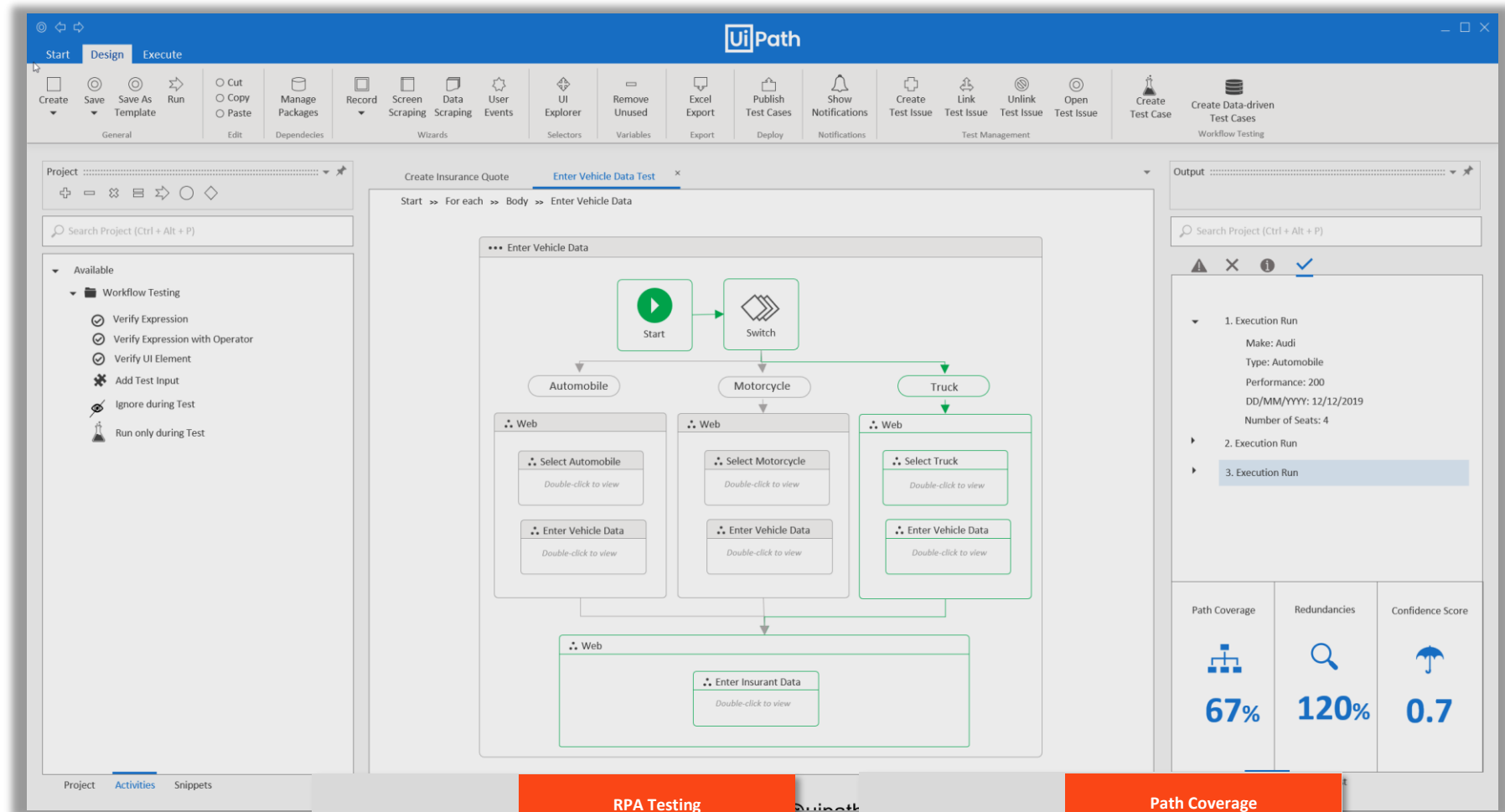


**UiPath Test Suite** is a new bundled solution that allows RPA and Application Test teams to **more rapidly create resilient automations** in **Studio Pro** and **improve collaboration and alignment** between the business and development using **Test Manager**.



# UiPath Test Suite: StudioPro for RPA Testing

## Build Resilient Enterprise E2E Automations



### RPA Testing

Create automated test cases from your RPA workflows to check their resilience against application and environment changes

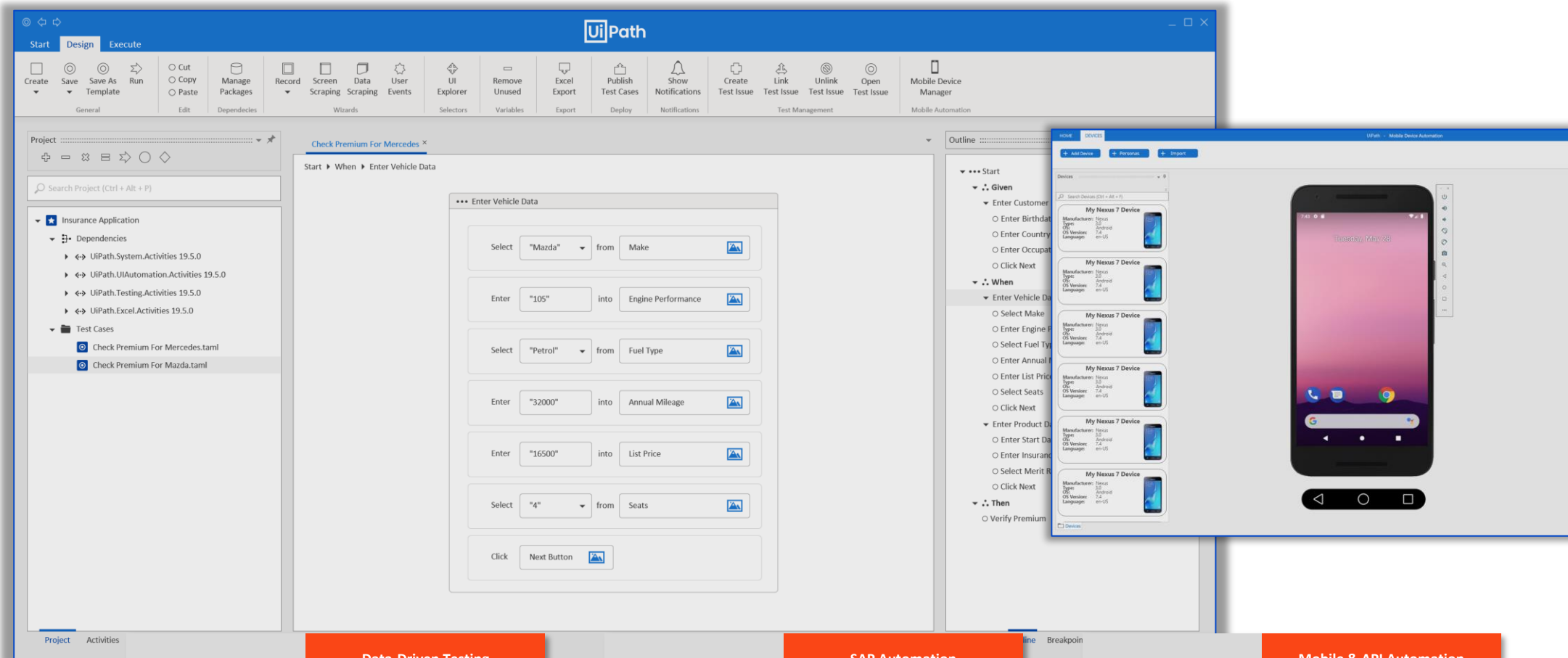
### Path Coverage

Visualize all paths through your automated workflow, covered by automated test cases and identify uncovered sequences



# UiPath Test Suite: StudioPro for Application Testing

## Leverage Enterprise Automation to Advance your Testing Practice



**UiPath**  
Reboot Work.™

### Data-Driven Testing

Process multiple data variations from various data sources through your automated test cases to check complex business logic in one go

### SAP Automation

Use pre-build SAP activities for SAP WinGUI and enjoy support for SAP Fiori to automate modern SAP applications such as SAP S/4 HANA and SAP SuccessFactors

### Mobile & API Automation

Check the quality of your software application continuously at API level and create automated tests for web, native or hybrid mobile apps.



Let's see  
how  
StudioPro  
works



# User profile and workflow automation comparison

USER PROFILE			
	StudioX	Studio	Studio Pro
USER TYPE	Business user	RPA developer	Specialized developer
CODING SKILLS	No code	Basic programming knowledge	Advanced programming knowledge
OPPORTUNITY IDENTIFIER	Employee	Employee and COE driven	Employee and COE driven

WORKFLOW AUTOMATION			
	StudioX	Studio	Studio Pro
AUTOMATION APPROACH	Bottom up	Top down	Top down
AUTOMATION TARGET	Straightforward tasks	Complex processes	Testing automation, complex processes
TYPE OF WORKFLOWS	Sequence	Sequence, flowcharts, state machines	Sequence, flowcharts, state machines, testing automation
PROJECT SIZE	Single file	Multiple files per projects	Multiple files per projects
FILE COMPATIBILITY	StudioX only	Supports Studio, Studio Pro & StudioX files	Supports Studio, Studio Pro & StudioX files
LICENSE TYPE	StudioX + Attended	Studio	Studio Pro

# Features comparison

FEATURES							
	StudioX	Studio	Studio Pro		StudioX	Studio	Studio Pro
DATA MANAGER	✓	✓	✓	ORCHESTRATOR ACTIVITIES	✓	✓	✓
VARIABLES AND ARGUMENTS MANAGEMENT		✓	✓	INVOKE PROCESSES		✓	✓
EXCEL WORKSPACE / SCRATCHPAD	✓			LONG RUNNING PROCESSES		✓	✓
RECORDER, DATA SCRAPING	✓	✓	✓	FORMS		✓	✓
WORD, PDF ACTIVITIES	✓	✓	✓	WORKFLOW ANALYZER	✓	✓	✓
GSUITE SUPPORT		✓	✓	COMPUTER VISION		✓	✓
DEEP ORCHESTRATOR INTEGRATION		✓	✓	SEMI-STRUCTURED/ UNSTRUCTURED DOCUMENT UNDERSTANDING		✓	✓
COMMON SCENARIOS	✓			API AUTOMATION		✓	✓
APPLICATION SCOPES		✓	✓	MOBILE AUTOMATION			✓
OBJECT BROWSER		✓	✓	RPA TESTING			✓
UNIFIED UI AUTOMATION	✓	✓	✓	VERSION CONTROL INTEGRATIONS (GITHUB, SVN, TFS)		✓	✓
MASS UPDATE DEPENDENCIES		✓	✓	APPLICATION TESTING			✓
GRANULAR UI AUTOMATION		✓	✓	INTEGRATION WITH TESTING MANAGER			✓
DEBUGGING		✓	✓	VERIFICATION ACTIVITIES			✓
CITRIX, TERMINAL AUTOMATION		✓	✓				

# UiPath Resources



Community  
Forum



Documentation  
Portal



Release  
Notes



ReFramework



UiPath  
Academy



UiPath  
Certification









Webinars



Video  
Tutorials

# Transformative Thursday Upcoming Sessions

Here's a quick look at our schedule

Phase	Webinar Topics	Date
 Discover	Crowdsourcing ideas - Automation Hub and Task Capture	20th August, 2020 <a href="#">Register now</a>
	Deep dive into AI enabled discovery tools -Process Mining & Task Mining	27th August, 2020 <a href="#">Register now</a>
 Build	Explore the brand new Ui Studio experience –Studio, StudioX and Studio Pro	3rd September, 2020 <a href="#">Register now</a>
 Manage	Discover the latest in UiPath Orchestrator and Automation Cloud	10th September, 2020 <a href="#">Register now</a>
 Run	A Robot for Every Person: The Next Wave of Personal Productivity	17th September, 2020 <a href="#">Register now</a>
 AI Family/ Engages	Deep dive into our AI products – Document Understanding, AI Fabric and Computer Vision	24th September, 2020 <a href="#">Register now</a>
 Measure, Connectors	Explore new features in UiPath Insights and our latest ServiceNow Connector	1st October, 2020 <a href="#">Register now</a>



# Q&A



**Thank You**